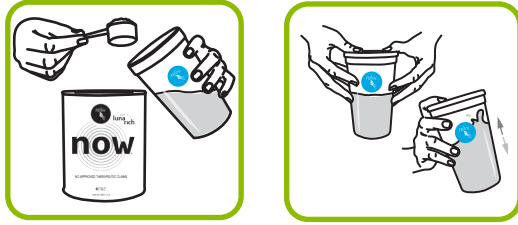


## How To Make Your Reliv Shake:



- 1 Mix with cold water or any juice drink using a glass or shaker cup.
  - 2 Close the lid tightly and shake it up or stir until the powder has dissolved.
- \* Best taken twice a day, one shake in the morning and another in the afternoon or evening. May be taken in combination with other Reliv products.



### Reliv Now® Consumer Information Panel

Serving Size: 1 Scoop (10.77 g)	
Servings per Can 56	
	per serving
Energy	25 kcal
Total Fat	0.5 g
Cholesterol	0 g
Total Carbohydrates	3.4 g
Dietary Fibre	1 g
Sugars	2.1 g
Protein	3.4 g
Vitamin A	1250 IU
Vitamin C	240 mg
Vitamin D	200 IU
Vitamin E	30 IU
Vitamin B1	1.5 mg
Vitamin B2	2 mg
Niacin	10 mg
Folic Acid	200 mcg
Vitamin B12	9 mcg
Vitamin B6*	2 mg
Biotin	150 mcg
Pantothenic Acid	10 mg
Calcium	560 mg
Iron	5 mg
Phosphorus	250 mg
Iodine	75 mcg
Magnesium	100 mg
Zinc	8 mg
Sodium	20 mg

#### Now Proprietary Herb Blend 95 mg

L-Methionine	Butternut Bark (Juglans cinera)
Kelp (Ascophyllum nodosum)	Irish Moss (Chondrus crispus)
Rutin (Ruta graveolens)	Garlic (Allium sativum)
Licorice Root (Glycyrrhiza glabra)	Bromelain (from pineapple stem - Ananas comosus)
Rhubarb Root (Rheum officinale)	Papain (Carica papaya)
Cayenne (Capsicum annuum)	n-zimes* and Isolase*
Rose Hips (Rosa canina)	Pycnogenol*

**Other Ingredients:** Non-GMO Soy Blend with LunaRich™ Soy Powder, Calcium Carbonate, Fructose, Brewers Yeast, Dicalcium Phosphate, Ascorbic Acid, Dimagnesium Phosphate, Non-GMO Soy Lecithin, Natural & Artificial Flavor, Alpha Tocopheryl Acetate, Potassium Chloride, Molybdenum Yeast, Biotin, Ferrous Fumarate, Calcium Pantothenate, Niacinamide, Copper Gluconate, OptiZinc® Brand of Zinc Monomethionine, Manganese Sulfate, Pyridoxine Hydrochloride, Riboflavin, Vitamin D3, Thiamin Hydrochloride, Vitamin B12, Potassium Iodide, Vitamin A Palmitate, Folic Acid, Selenomethionine, ChromeMate® Brand of Niacin Bound Chromium Polynicotinate. Contains permitted food conditioner and flavors.



Reliv Now® is vegetarian, certified Kosher and Halal, ideal for those with lactose intolerance, and contains no animal compounds, artificial preservatives, artificial sweeteners or trans fat.

A product of Reliv International, Inc.  
P.O. Box 405, Chesterfield, MO63006-0405  
Made in U.S.A.

Your local Independent Reliv Distributor is:



Distributed By:

#### Malaysia

**RELIV INTERNATIONAL SDN BHD**  
No. 04-F14-1, Saujana Biz Point,  
Jalan Bidara 6/1, Saujana Utama 3,  
Bandar Saujana Utama,  
47000 Sungai Buloh,  
Selangor

#### Singapore

**RELIV SINGAPORE PTE LTD**  
No. 04-F14-1, Saujana Biz Point,  
Jalan Bidara 6/1, Saujana Utama 3,  
Bandar Saujana Utama,  
47000 Sungai Buloh,  
Selangor

Phone: 03 6038 7388 (MY)  
+60 3 6038 7388 (SG)

Email: mydrinquiries@relivinc.com (MY)



relivasiapacific

reliv.com.my (MY)  
reliv.com.sg (SG)



with  
luna rich™

# now®

A powerful combo of nutrients for your  
daily optimum nutrition



Nutrition made simple, life made rich.